

WORKS

WORKS

VOL. 8

PROGRESS



# FOREWORD

Simple, clear exposition. That, more than anything, intrigued this year's WIP jury. While the work they were charged with assessing seems to grow in complexity and size every issue, this year's jurors sought understanding. Simple, clear exposition. On virtually every project, they asked WHY? WHY does the tower twist? WHY has the designer selected this material over, say, that material? WHY does this deserve to be considered good design? Why indeed.

Lately we've been making an effort at RTKL to re-define how we think about what we do every day. We call it Performance-Driven Design<sup>SM</sup>(PDD) and we believe it forces us to ask the WHY? question over and over again as we design. Because it relies on defining tangible, measurable metrics, PDD strips away the subjectivity of aesthetics (this is prettier than that) and forces us to assess our work in three broad categories of value creation: economic, social and environmental. Because it makes us focus on WHY?, PDD leads us to a more compelling narrative: I twisted the tower because it reduces the wind co-efficient and this makes the building lighter which allows me to reduce the amount of structural steel. This not only made it pleasing to the eye, it saved our client a lot of money.

As expected, this year's WIP confirms what many of us already know about today's architecture and design industry—the center of gravity has shifted to Asia. More than 40 of this year's 70+ entries are projects in Asia—mostly China—though a growing number comes from the Americas, a welcome sign that perhaps the economic recession is beginning to thaw in some markets. We'll see.

So what's our take-away? The world still needs big thinking and big solutions to help solve its big challenges. And while our U.S. work seems focused on value creation, our work in Asia and the Middle East seems to offer something, well, big. Yes, these developing regions are pushing the envelope in terms of development, technology and innovation, but look closer and you'll see elements of this in each of the winning entries, wherever they may be.

Finally, this year's jury was a wondrous, refreshing mug of honesty. Insightful and brutally candid, they agreed on almost nothing, which makes for an interesting day, but they attacked their assignment with gusto and found a way to a consensus. They have spurred a larger conversation about design—and the role of simple, clear exposition—and that, perhaps more than anything, helps us become a better design practice.







## NANDO MICALE FAIA, AICP

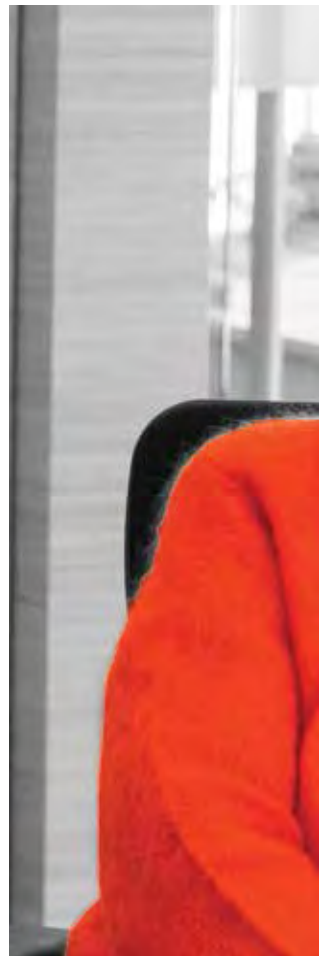
is a principal with national design firm, WRT. His past work includes city-wide urban design plans, design of waterfront communities, suburban smart growth strategies, transit-oriented development and urban infill projects. Micale is also one of the nation's leading experts in the design of mixed-income communities with successful HOPE VI neighborhoods in 12 states. In addition to his professional accolades, Micale has worked as an adjunct professor at PennDesign since 1996. After starting as a planning problems workshop teacher, he now leads second year studios focused on urban design and transportation investment.



## MATTHEW HURSON

leads efforts for Hines in the Washington, DC metro area. His focus is on opportunities in mixed-use, transit-oriented development and property development and management needs of U.S. government users in the national capital region. In the past, Hurson has

served as a development manager for Hines on major commercial projects in Minneapolis, Hartford, Conn. and New York City. He also led the development of two large, mixed-use projects in Montgomery County, Maryland for the JBG Companies.





## **ROGER K. LEWIS FAIA**

is a practicing architect and urban planner and a professor emeritus of architecture at the University of Maryland, College Park. Since 1969, his Washington, DC based firm has worked on a number of projects, including: new communities, residential complexes, affordable housing and schools for both private and public sector clients. Lewis helped start the architecture program at Maryland and taught architectural design at the university from 1968 to 2006. In the 1990s, he

also helped launch UMD's National Center for Smart Growth. In addition to his academic and professional work, Lewis pens the "Shaping the City" column for The Washington Post. Since 1984, his column has explored issues surrounding architecture, planning and urban development. He is a regular guest on The Kojo Nnamdi Show on American University's WAMU-FM and is the author of "Architect? A Candid Guide to the Profession" and "The Growth Management Handbook."



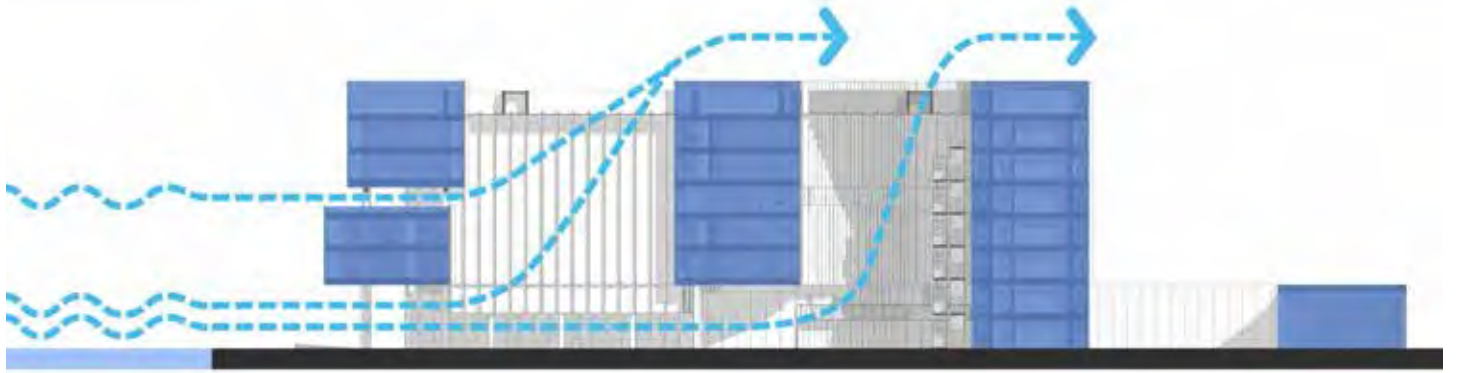
## **SUSAN S. SZENASY**

is the editor in chief of the architecture and design focused Metropolis magazine. Since 1986, she has helped the magazine achieve domestic and international recognition with landmark design journalism. Szenasy is also an internationally recognized authority on sustainability and design. She currently serves on the board of the Fashion Institute of Technology's Interior Design Department and the Center for Architecture Advisory Council.

# JURY

Darren Chang  
Neal Hudson  
David Kaplan  
Patrick Keeney  
Jeong Han Kim  
Matthew Loeffler  
Ian Marcus  
Kirill Pivovarov  
Yuanhui Wang  
Jeremy Yoon

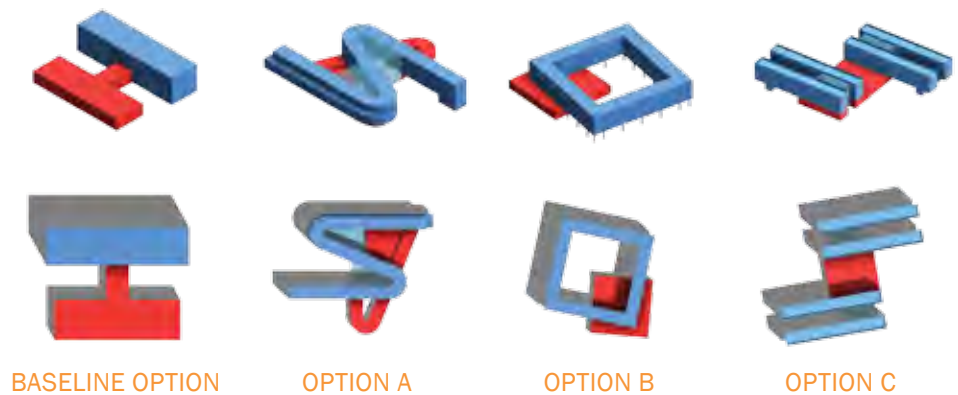
# FOLLOW





# THE LEADER

Architecture isn't the most important aspect of Performance-Driven Design<sup>SM</sup> (PDD). At the heart of the issue lies the real goal of showing users and communities better alternatives. The goal for the Tencent R&D Building in Wuhan, China, was to show that implementing PDD techniques creates a better, more enjoyable environment. The design team focused on a number of tangible goals which provided them with the proper analytics to successfully optimize the design. These include: daylight performance, energy optimization and linking the workplace with the surrounding natural environment. The result is a workplace that will provide a quality environment for employees and significantly reduce energy consumption.



**“ THE STUDY IS ON TARGET. THIS IS A GREAT EXPLORATION OF HOW THE BUILDING RESPONDS TO WIND AND SUN. ”**  
**SUSAN SZENASY**







Agne Balistrabas  
Tom Brink  
Ricky Crum  
Alberto Galindo  
Hon Yan Mok  
Newsha Mirzaie  
John Munn  
Gerry Renaud  
Scott Schwieterman  
Sarah Wicker

# TAKING A NESTED INTEREST





# “ A UNIQUE AND BEAUTIFUL PRESENTATION FOR THE CLIENT ”

**ROGER K. LEWIS**



In today's competitive real estate market, it pays to stand out. The Nest Residential Tower promotion package proves it. Faced with trying to capture the attention of busy investors and increased competition, the group behind this package knew they would have to make a memorable first impression. They decided to abandon the standard 11x17 book and create a design presentation package, complete with a 3-D model of the finished building. The final product follows RTKL's sustainability push by using less paper and plastic—a hopeful step in the right direction to providing more sustainable options to our like-minded clients.

Bin Cao  
Peng Du  
Zhao Guo Jiao  
Lu Liu  
Xialing Li  
Joyce Shao  
Yunxiang Shan  
Xiaoyue Sun  
White Wang  
Xiaohua Wu  
Li Wang  
Hao Xu  
Kang Yu

# HIDDEN GEM

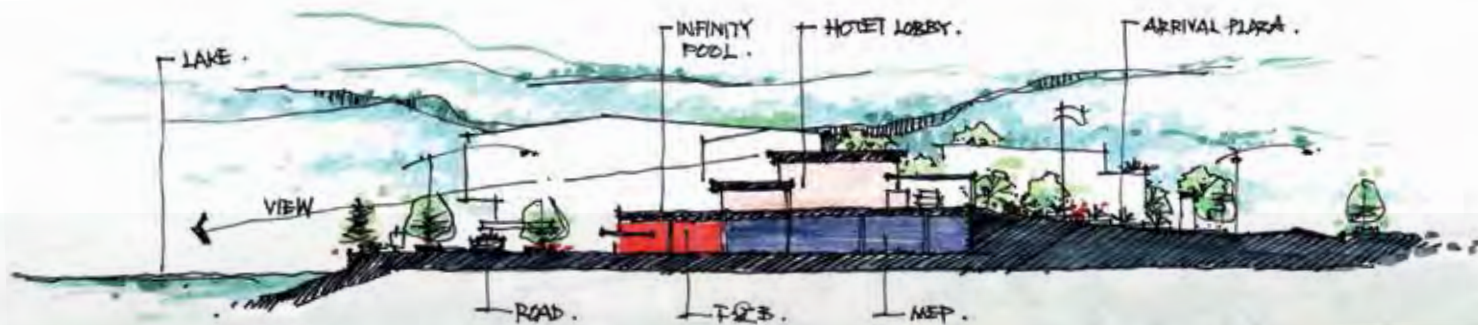




China may be one of the fastest growing nations in the world, but it hasn't lost the connection to its history. The design of the Xi'An Gemdale Hyatt Resort Hotel is mindful of this relationship. Using Tang Dynasty-style architecture as a guideline, designers created a modern-day retreat with an old world feel.

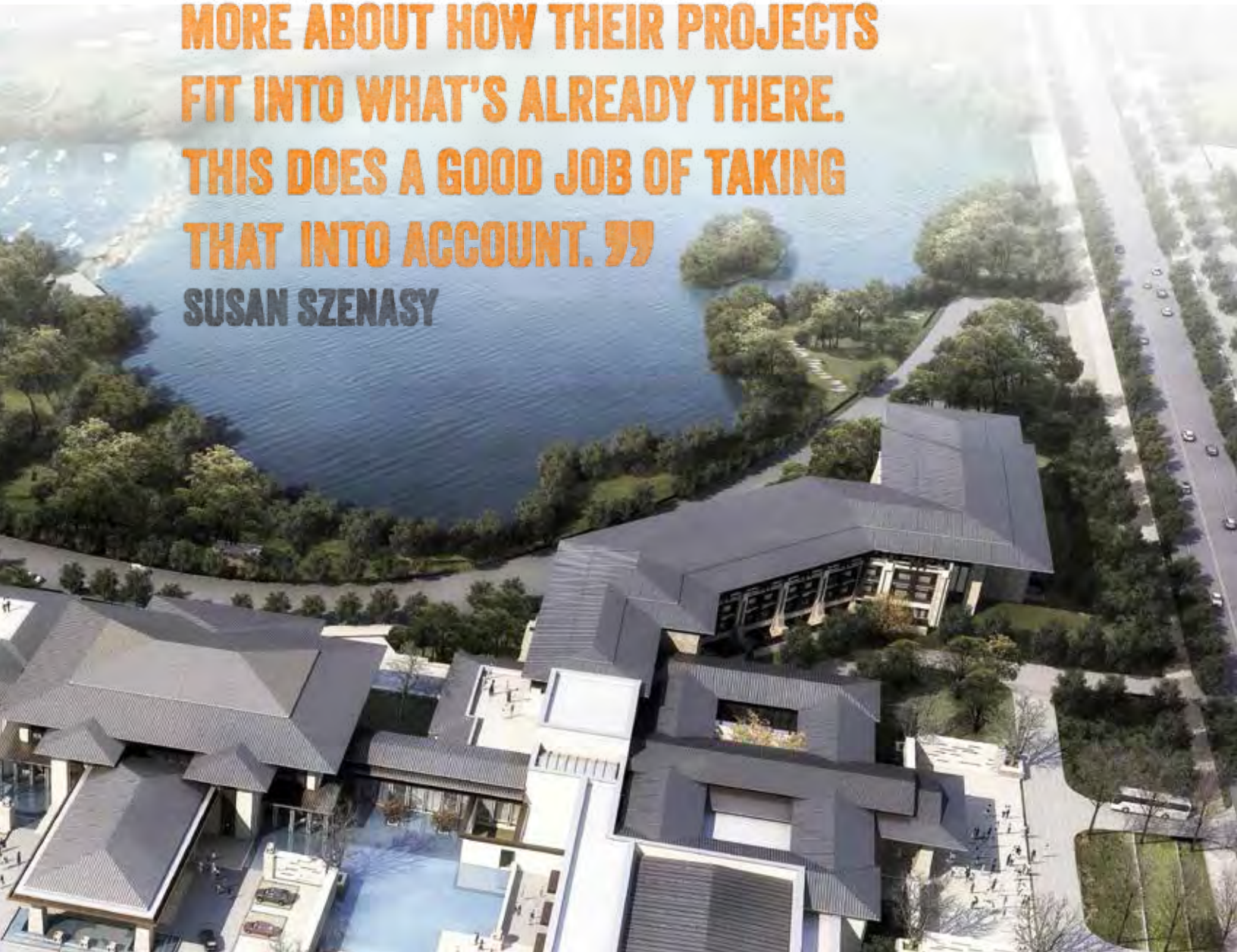
The design translation is most prevalent in the façade design which follows the proportions common to the Tang form. Culturally relevant design often requires a keen sense of sensitivity. Designers of this hospitality hideaway found a way to translate intangible value into tangible design.







**“ THE WORLD IS LOOKING THE SAME. DESIGNERS HAVE TO THINK MORE AND MORE ABOUT HOW THEIR PROJECTS FIT INTO WHAT’S ALREADY THERE. THIS DOES A GOOD JOB OF TAKING THAT INTO ACCOUNT. ”**  
**SUSAN SZENASY**



16-17

**CCTV HEADQUARTERS COMPETITION**

BEIJING, CHINA

Stephanie Clements

Michelle Denyer

David Kaplan

Matt Karner

Xiaoguang Liu

Kirill Pivovarov

Sarah Tanner

Frank Zhao

# NEW [EST] MEDIA

A detailed architectural sketch in black ink on a white background. The sketch depicts a complex, multi-level structure with a prominent grid of vertical and horizontal lines. The lines are drawn with varying thickness and intensity, creating a sense of depth and movement. The overall impression is that of a conceptual or early-stage architectural drawing, possibly representing a modern building or a large-scale urban intervention.

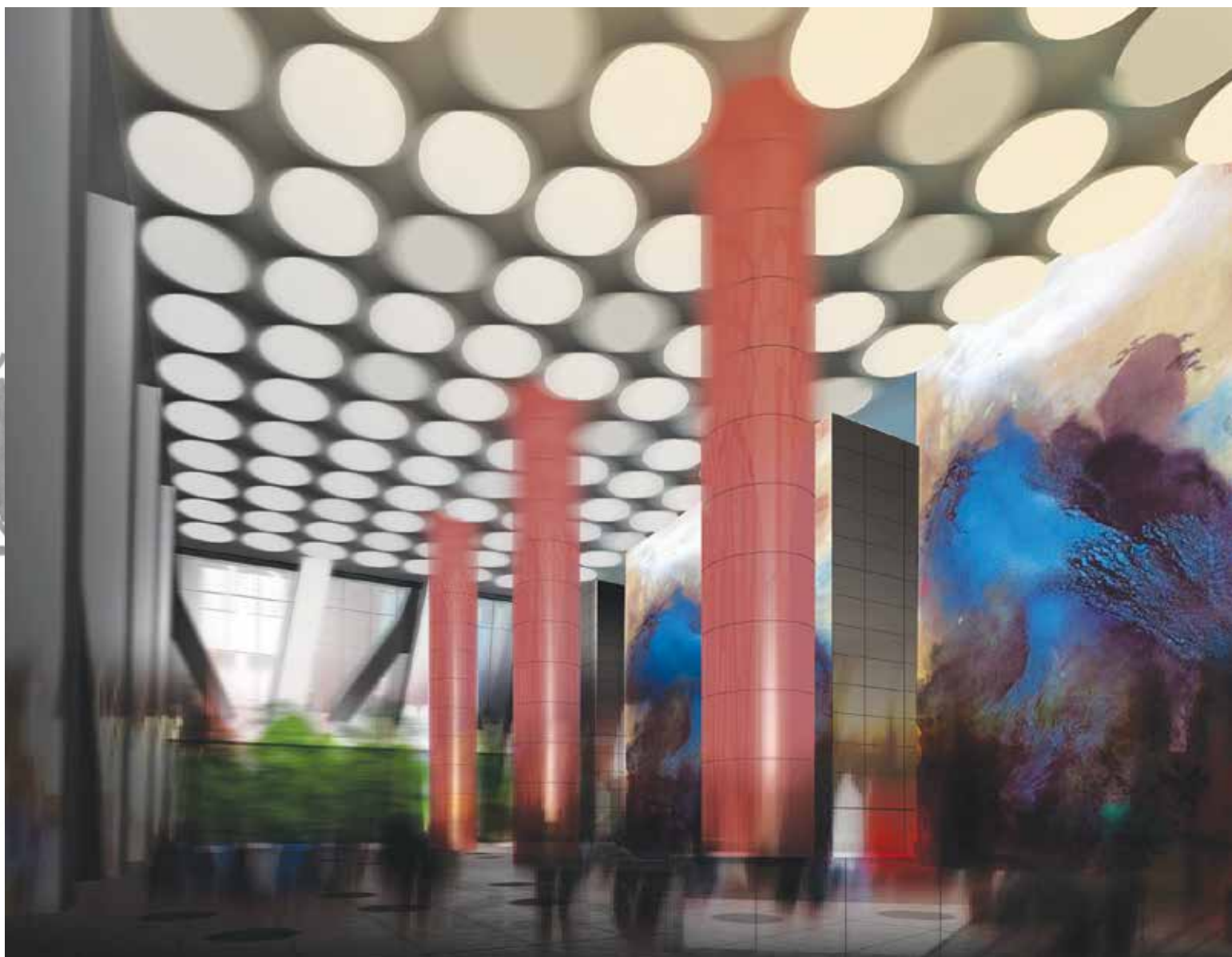
“A CREATIVE, RATIONAL AND  
WELL-PRESENTED DESIGN”

**NANDO MICALE**





A company's mission shouldn't seem like an elusive tenant within their workspace. Instead, the brand should be reflected throughout in both conventional and unconventional ways. At CCTV Headquarters, designers took this into account when creating an interior scheme for this OMA-designed landmark building. The interior design accommodates the company's unique needs as a major broadcast network and a state-run entity. Digital media elements were critical in expressing CCTV's ethos, while usable workspace and cultural design features help tie the design together.



**THE HARLEM EDGE DESIGN COMPETITION**

HARLEM, NEW YORK, USA

Jocelyn Hoppe  
Bill Jackson  
Daniel Montes  
Mark Palmer  
Agustina Soler  
Simcha Ward  
Jeremy Yoon

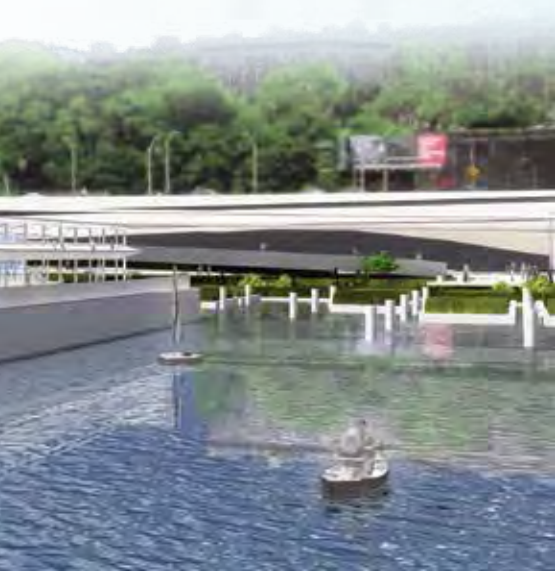
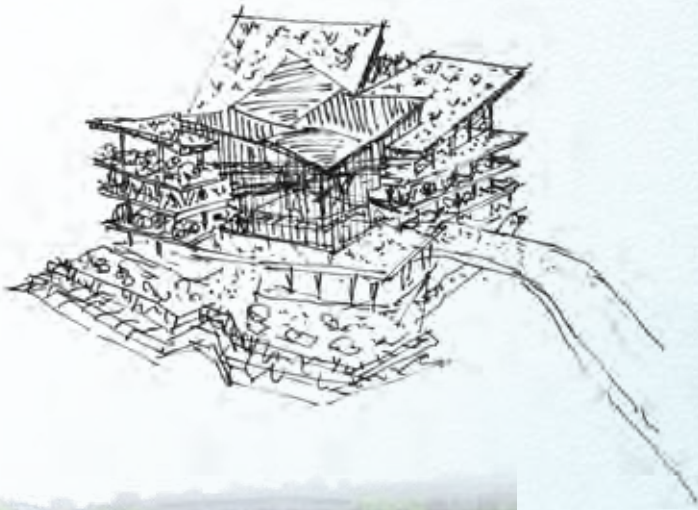
# HOP.

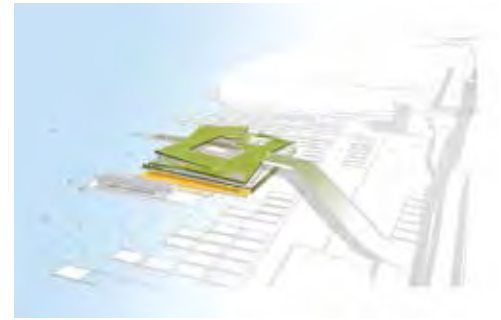


# SKIP. JUMP.

“Is RTKL an industry leader in sustainable architecture and Performance-Driven Design<sup>SM</sup>(PDD)?” That was the question posed to the RTKL DC Sustainability Group in early November 2011. It seemed like a simple question at the time, but the response was anything but simple. The general consensus was that, while RTKL positions itself externally as a thought-leader in the industry, the firm needed to improve at engaging and promoting innovation internally and at all levels. A group of young employees took the initiative and decided to participate in a design competition. The Lily Pad Effect was the entry submitted to The Harlem Edge—Cultivating Connections

competition by the RTKL team Sponsored by AIA New York’s Emerging New York Architects (ENYA) committee, the project required teams to repurpose a decommissioned sanitation barge depot on the Hudson River in West Harlem. The RTKL team proposed a network of “hubs” along the New York City river system, including The Harlem Hub. This building is part entertainment venue, part urban agricultural machine and part river filtration network. The team hopes that these efforts will inspire other young designers to take interest in issues affecting our world and create design solutions to help solve them.





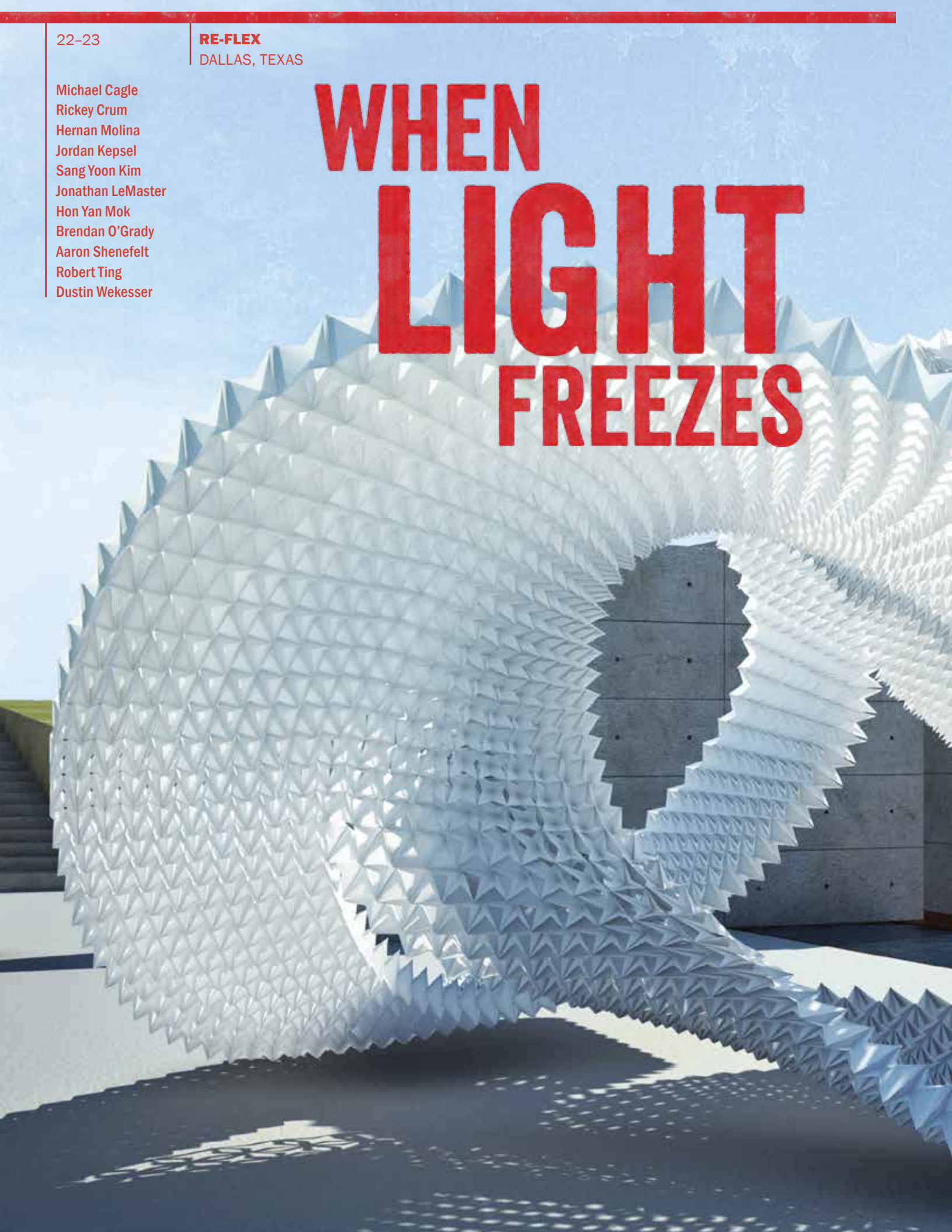
**“THE TEAM DEPICTED THE AREA WELL AND ALL OF THE ELEMENTS WORK TOGETHER.”**  
**MATTHEW HURSON**





Michael Cagle  
Rickey Crum  
Hernan Molina  
Jordan Kepsel  
Sang Yoon Kim  
Jonathan LeMaster  
Hon Yan Mok  
Brendan O'Grady  
Aaron Shenefelt  
Robert Ting  
Dustin Wekesser

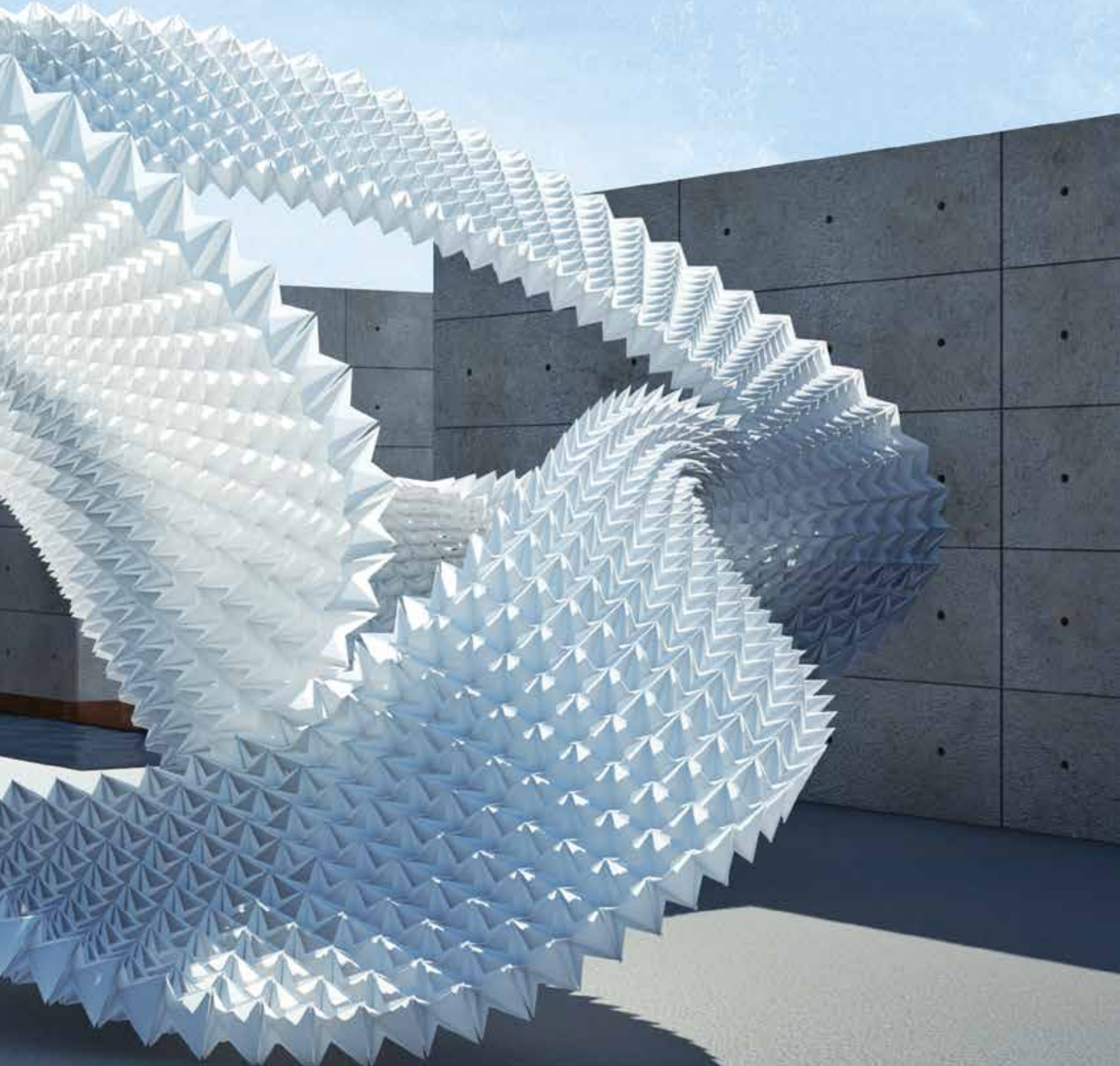
# WHEN LIGHT FREEZES





We've heard that access to natural light creates a better environment, but it's not always easy to achieve. The team behind RE-FLEX questioned whether there was a method to make this task simpler for designers. Their solution was to use parametric design and digital fabrication to create a responsive, expandable and customizable system based on pre-defined performance driven criteria. In other words, it would redefine the way we think about

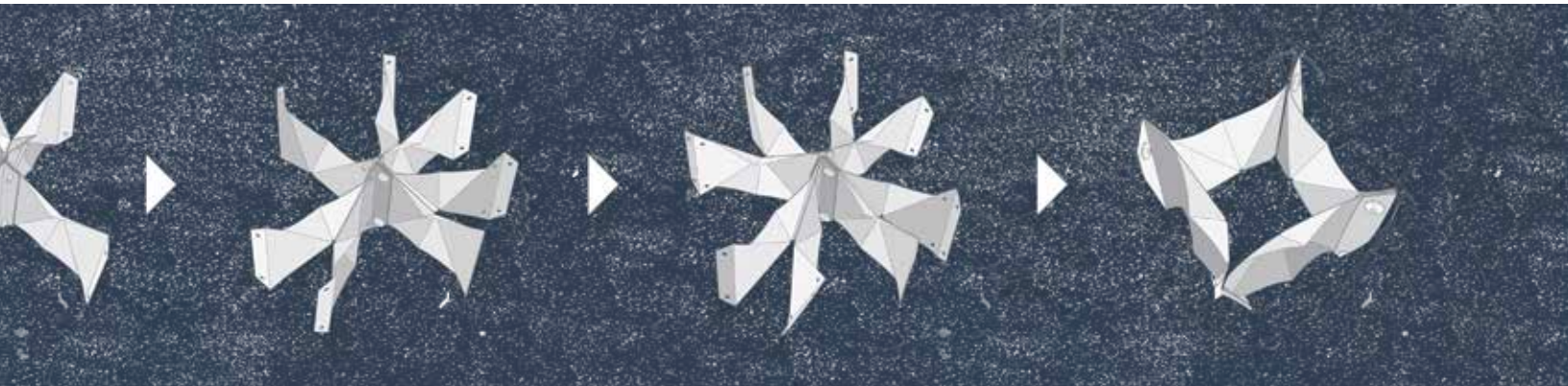
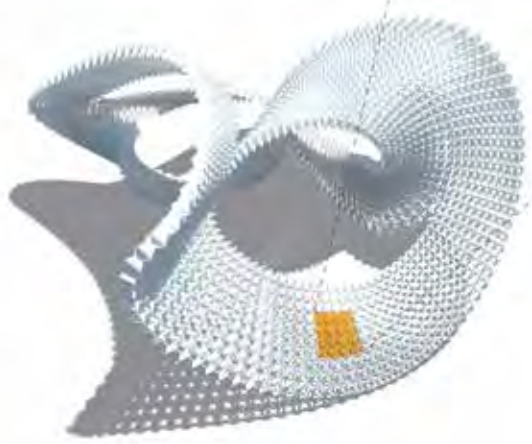
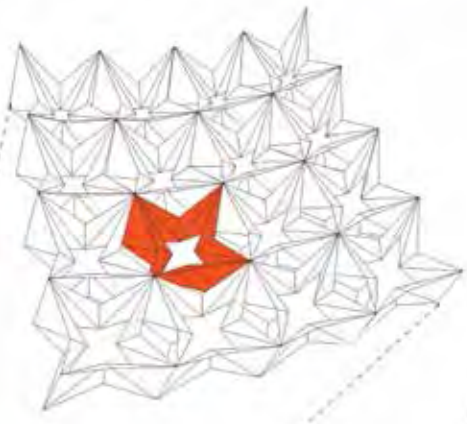
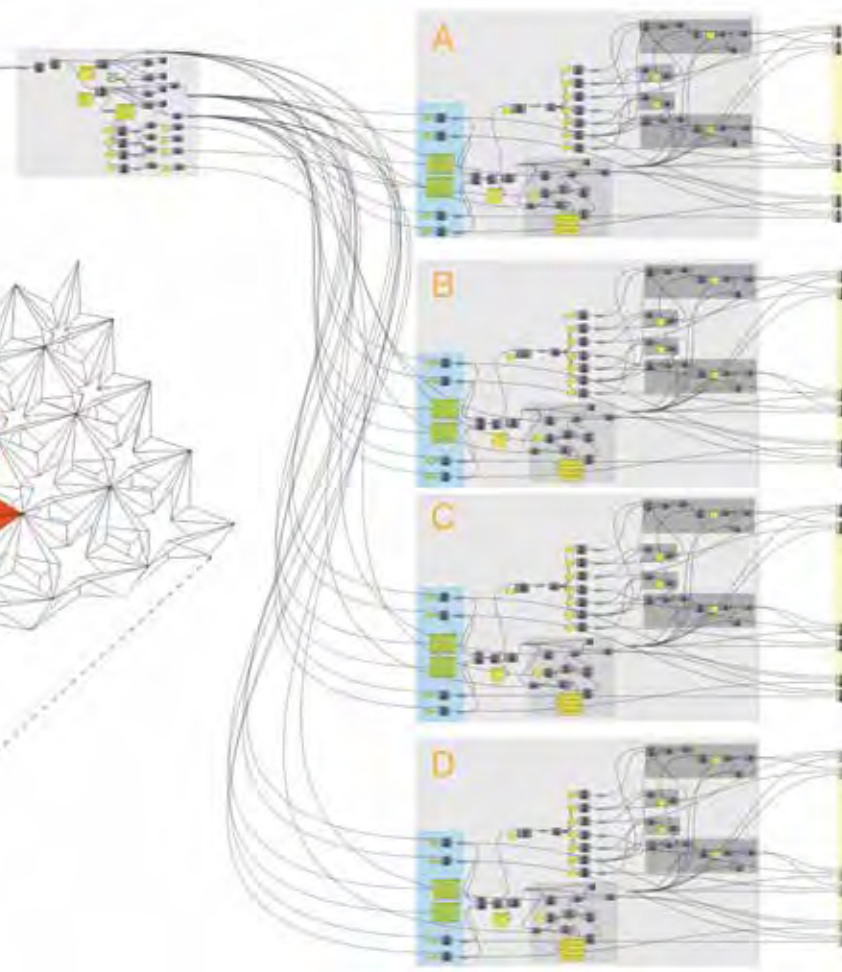
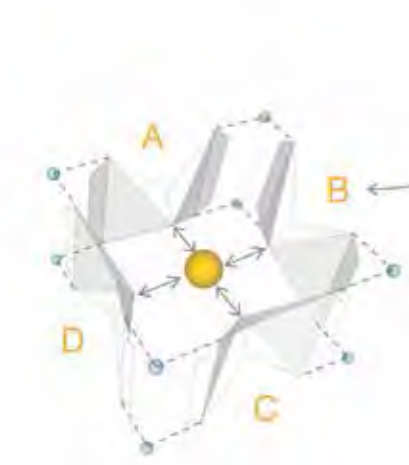
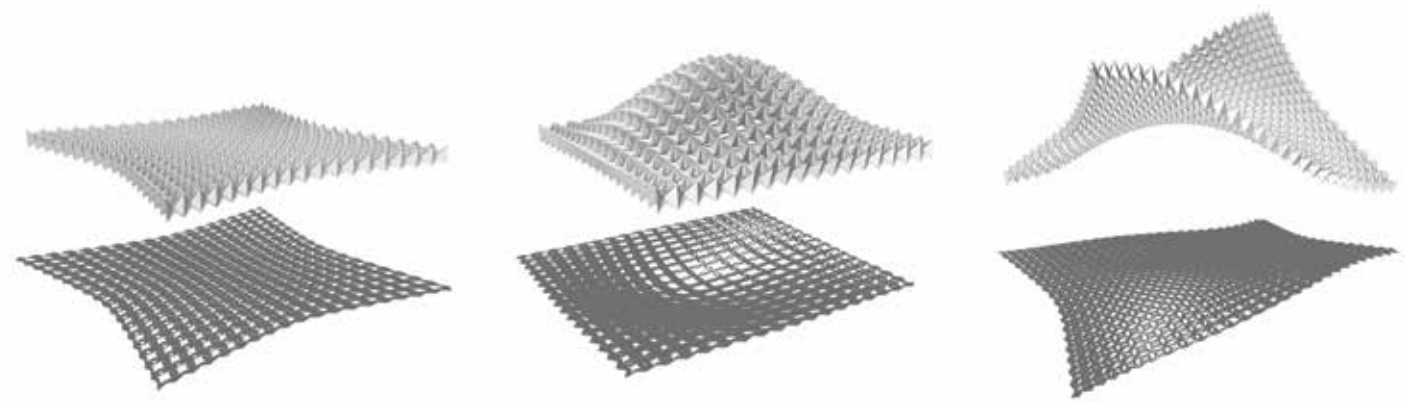
architectural skins by tailoring the design to fit a building's needs in order to maximize interior lighting and control exterior climate effects. RE-FLEX serves as a prime example of how rigorous research and experimentation can lead to innovative design solutions that are a direct result of focusing on issues related to cost, construction and performance rather than focusing solely on aesthetics.



**“ AN INGENUOUS MAKING  
OF ONE COMPONENT ”**  
ROGER K. LEWIS

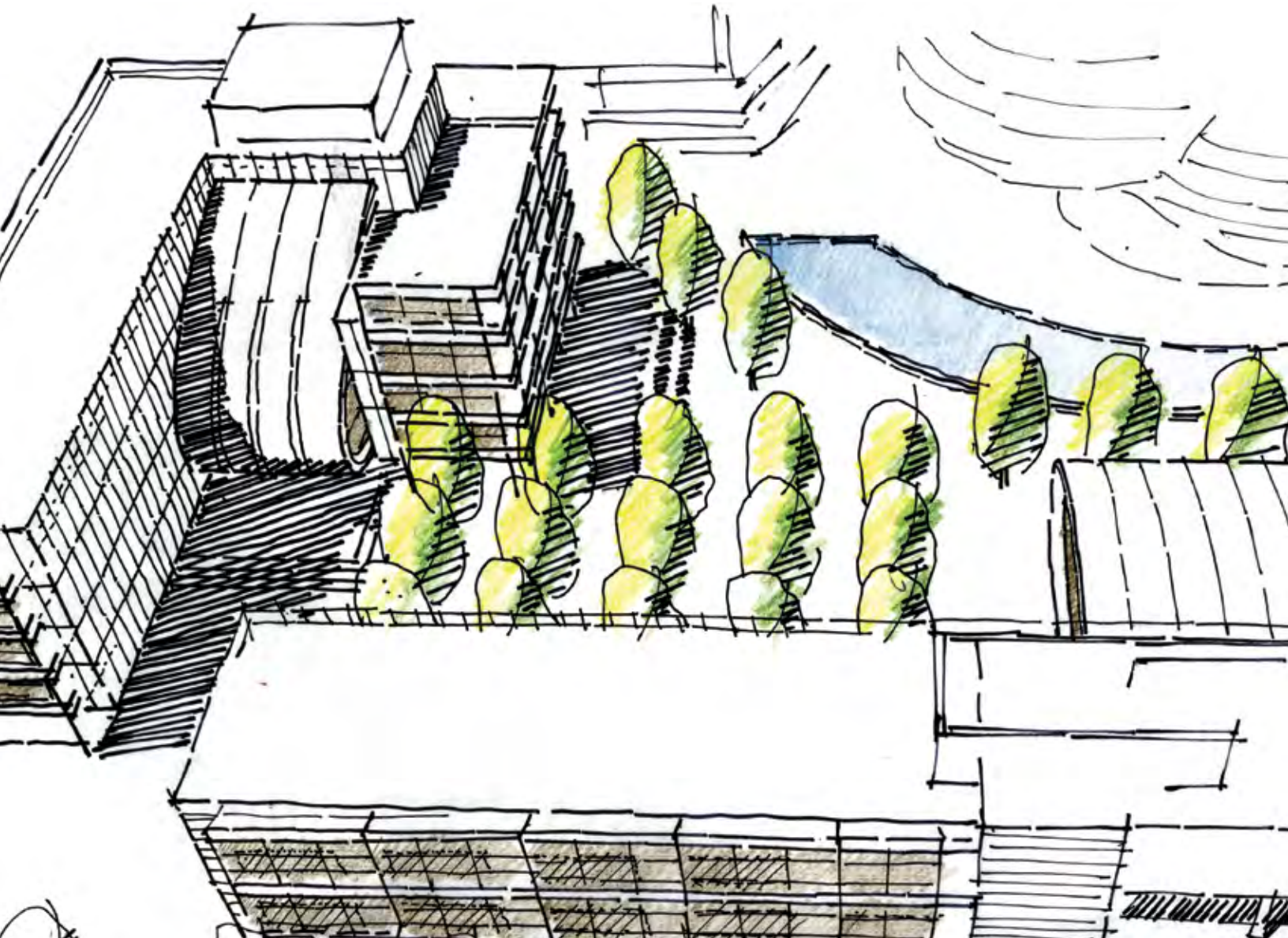






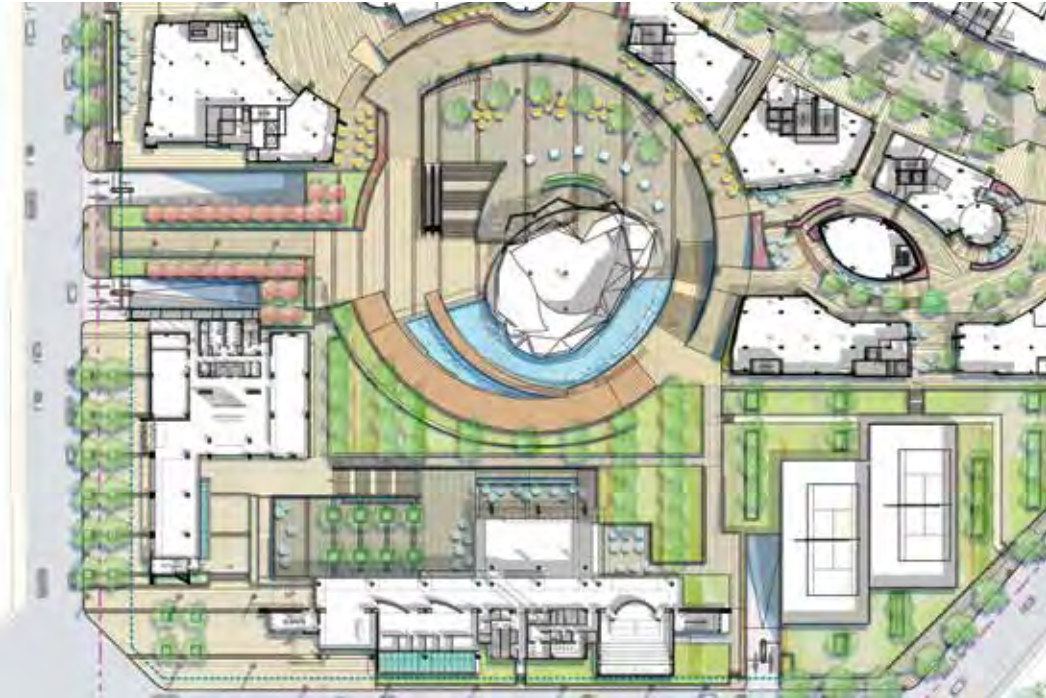
Kathleen Callaghan  
Michelle Denyer  
Nathan Ferrance  
Dennis Gaffney  
Rod Henderer  
Neal Hudson  
Tim Hutcheson  
Matt Karner  
Kristen Vican  
Christopher Walker  
Maggie Willis  
Jiang Wu

# UNDER MY SKIN





When it comes to urban design, placemaking is essential. The challenge lies in creating a sense of place within large-scale, mixed-use developments—this is the case with the Fantasia Headquarters and Academic Training Center in Chengdu, China. The building anchors the massive Meinian Plaza Mixed-Use Development which combines office, academic, hospitality, civic and retail on this one site. For this portion of the project, designers planned a series of transitions from public to private realms using interior and exterior spaces with different scales. This allows Fantasia to be integrated with the pedestrian experience and helps create an authentic urban fabric for Meinian.



**“WORKS URBANISTICALLY”**  
**NANDO MICALE**

Neha Baraskar  
Jinge Chai  
Greg Fowler  
Yoti Huang  
Jason Kim  
Bethy Zhang  
Len Zhao



# LARGE AS LIFE



For most new developments, three things are paramount: location, location, location. This is true with the Dalian Jinzhou Gold Coast International Business District in Dalian, China. Located on the east side of Dalian's new international airport, this district is positioned to become the logistical hub of northeast Asia. Taking the location's environmental concerns into consideration, the design team divided the site into four sections, or "islands," each with its own unique purpose. Integrating business, finance, entertainment and leisure into one area creates a true mixed-use experience for users and will spur growth and opportunity in this dynamic region.



**“ THE PEDESTRIAN-FRIENDLY SCHEME MAKES FOR A LIVABLE COMMUNITY AND SHOWS WISE JUDGMENT BY THE DESIGNERS. ”**

**ROGER K. LEWIS**



Bin Cao  
Yi Li  
Lydia Liu  
Xiaokai Wang  
Wanting Yao

# MAKING WAVES

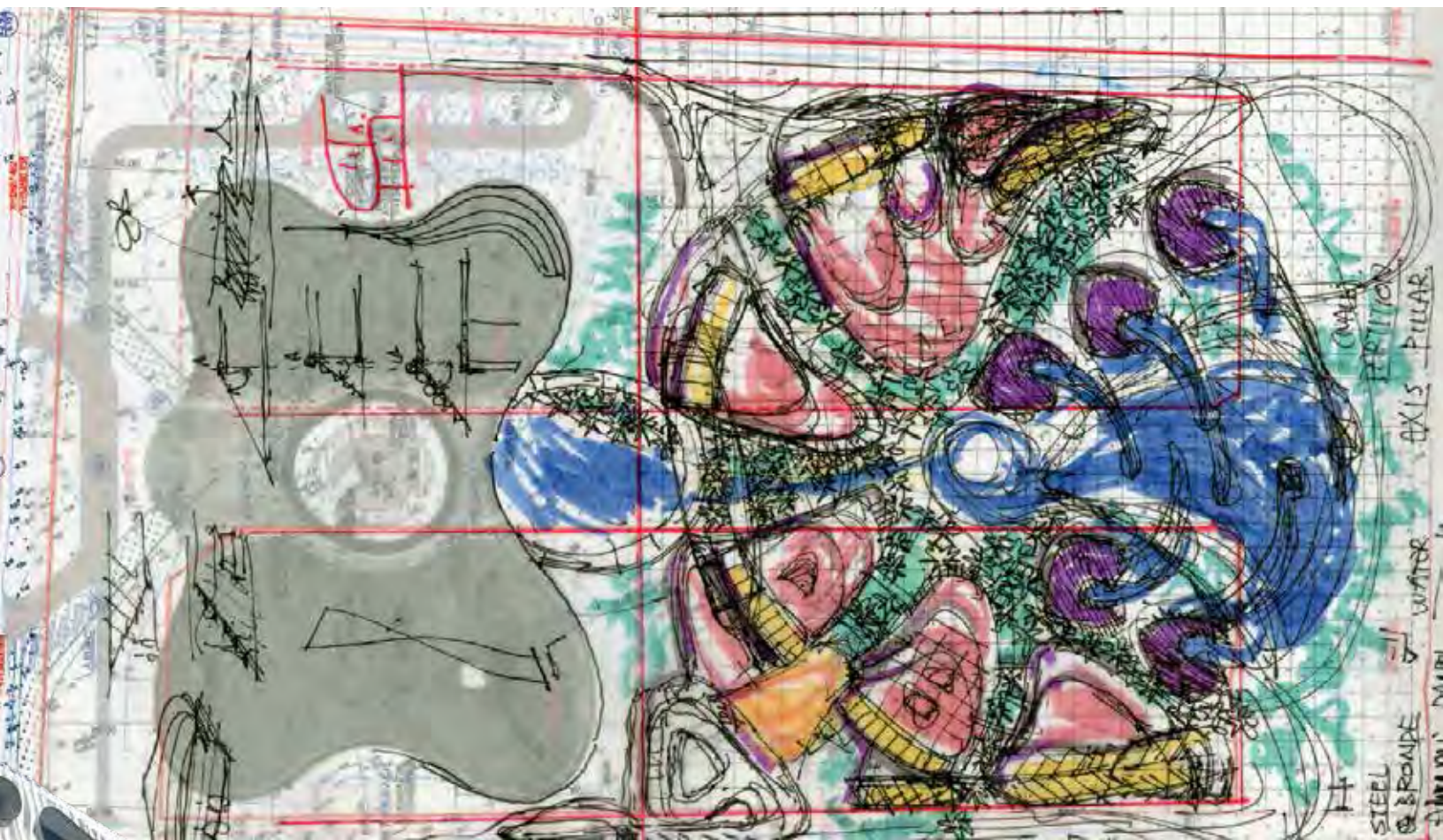




How to develop without over-developing is a concern in many areas of the world. As the biggest island in China, Hainan is an already well-known tropical tourist destination bracing for a hospitality boom, especially in the Yalong Bay area. With hopes to become recognized for its collection of high-end hotels, developers plan to add over 100 big name hotels in the coming years. The Haitang Bay Marriott Hotel takes this seemingly inevitable future into account. As phase two of this project,

the hotel will provide hospitality options for the adjoining duty-free mall which is anticipated to be the largest in Asia. Along with the hotel accommodations and high-end amenities, the site will also include Marriott apartments, part of the brand's Autograph Collection. From environmental preservation to public impact, the designers took a special interest in making the project a destination for the community, not just another massive hospitality complex.





**“ HOTELS SHOULD LOOK FUN. THIS LOOKS LIKE SOMEWHERE YOU WOULD WANT TO GO AND HAVE A MEMORABLE EXPERIENCE. ”**  
**SUSAN SZENASY**





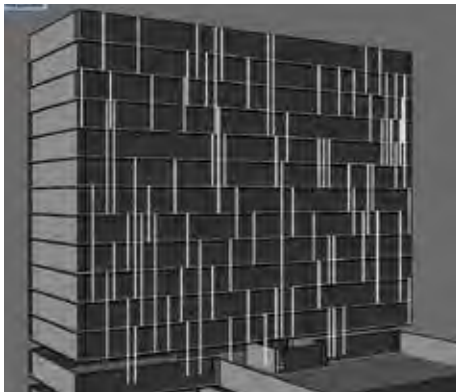
Alberto Galindo  
Hon Yan Mok  
Brendan O'Grady  
Scott Schwieterman  
Harold Thompson

# “AN EFFECTIVELY COMMUNICATED IDEA FOR BETTER BUILDING PERFORMANCE”

**MATTHEW HURSON**

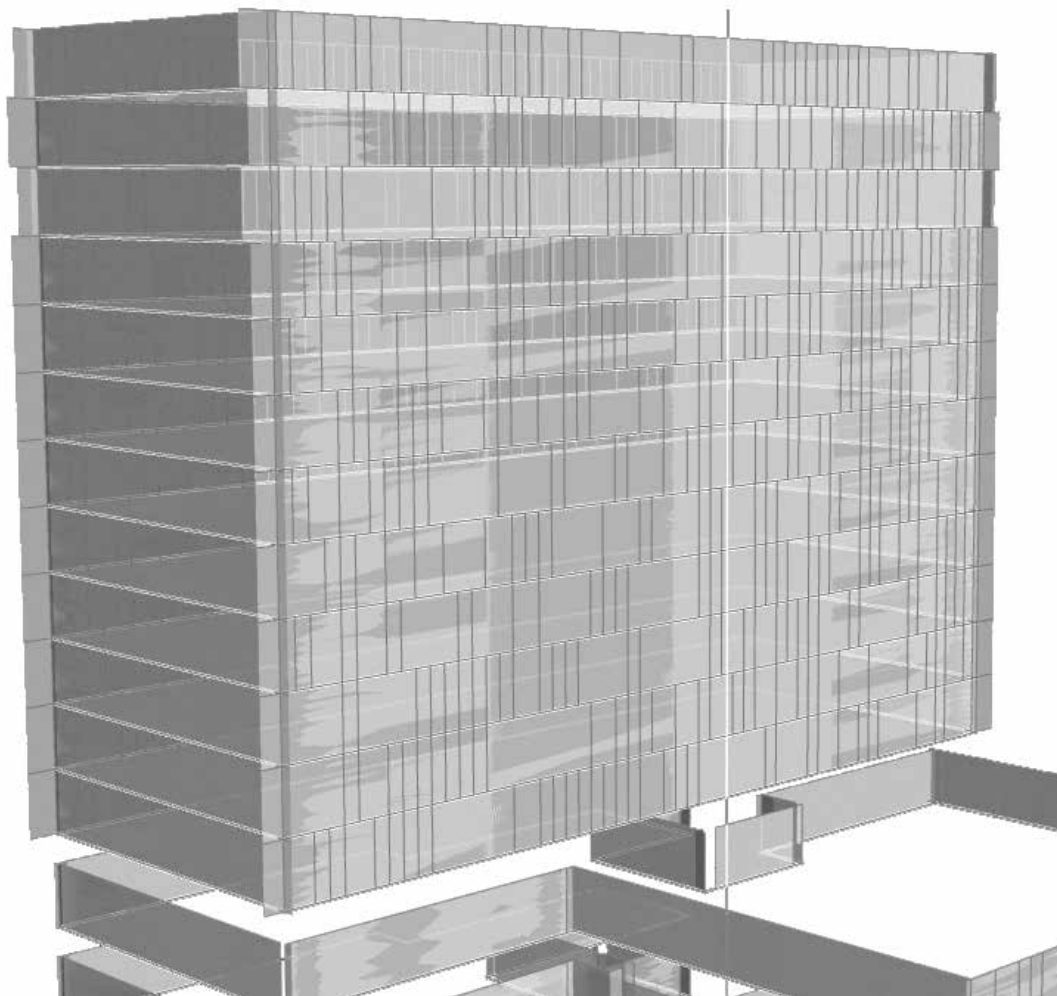
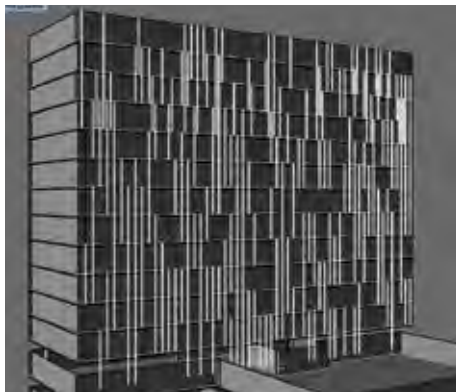


# ORGANIZED CHAOS

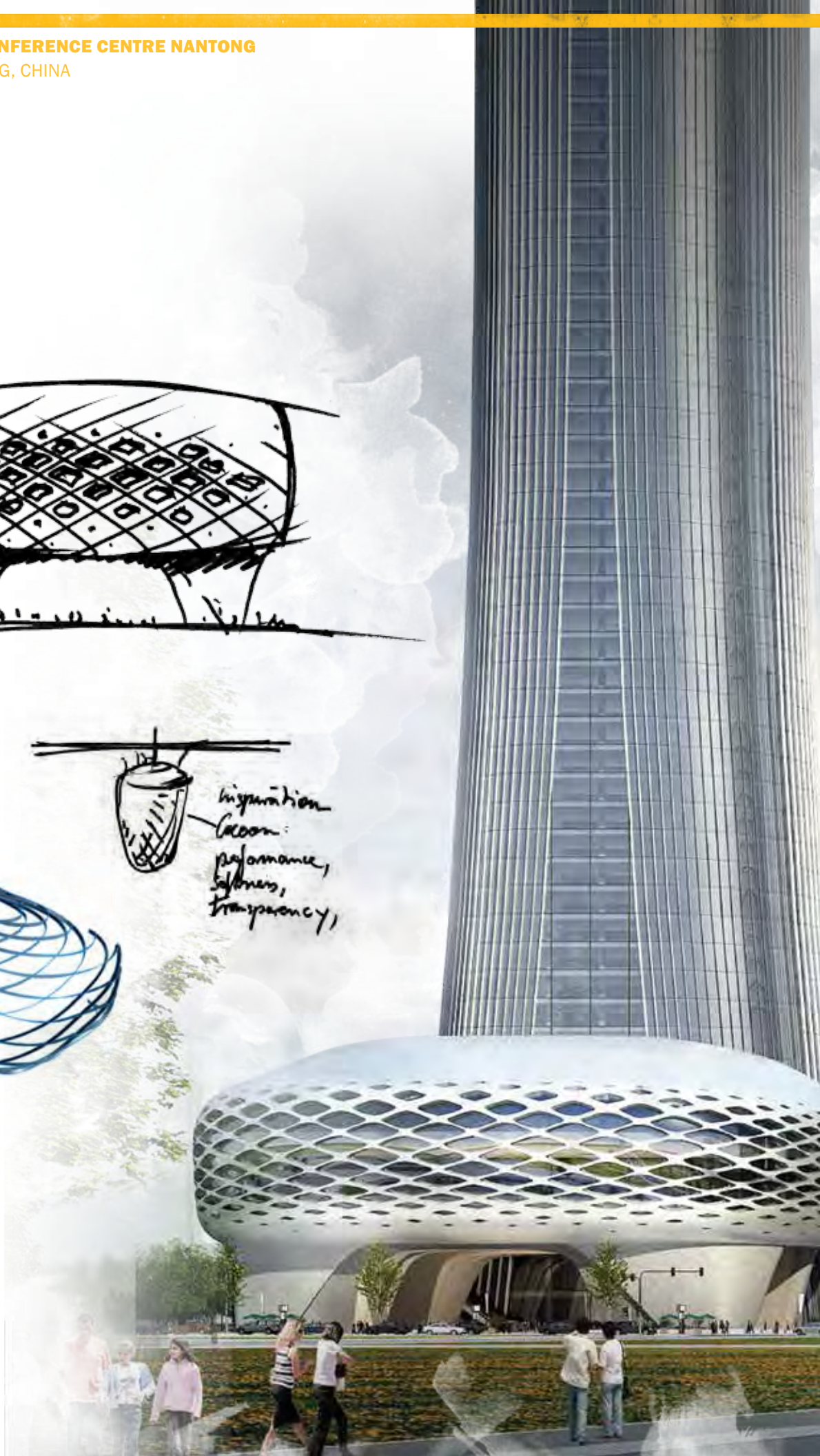
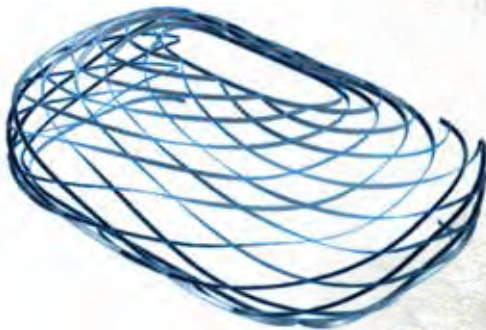
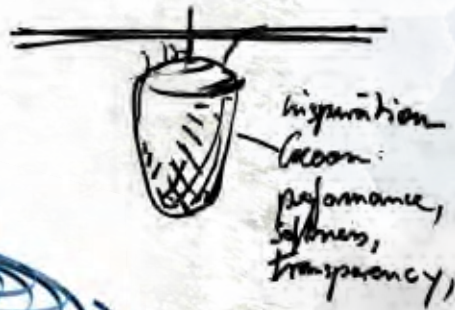
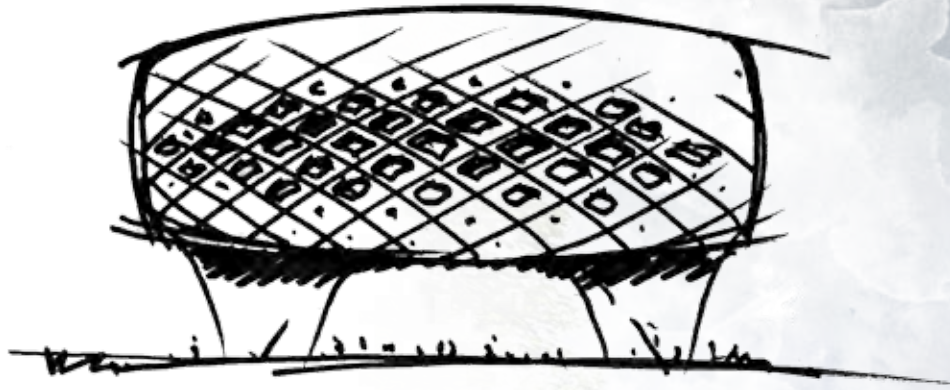


The very nature of hotel design lends itself to a repetitive exterior design. More or less, hotel façades are typically characterized by a uniform set of openings in a grid distributed across a solid surface. Punta Pacifica Hotel challenges these commonplace design standards by camouflaging the basic pattern with a unique façade. Using parametric design, the project team created a modular system of glass and

solid panels that does not repeat from bay to bay or floor to floor. The system also allows for the same percentage of glass versus solid façade in each room to ensure equal amounts of day lighting. In the end, the design team was able to find a unique solution to a common problem with this project type while meeting the requirements and budget constraints outlined by the client.



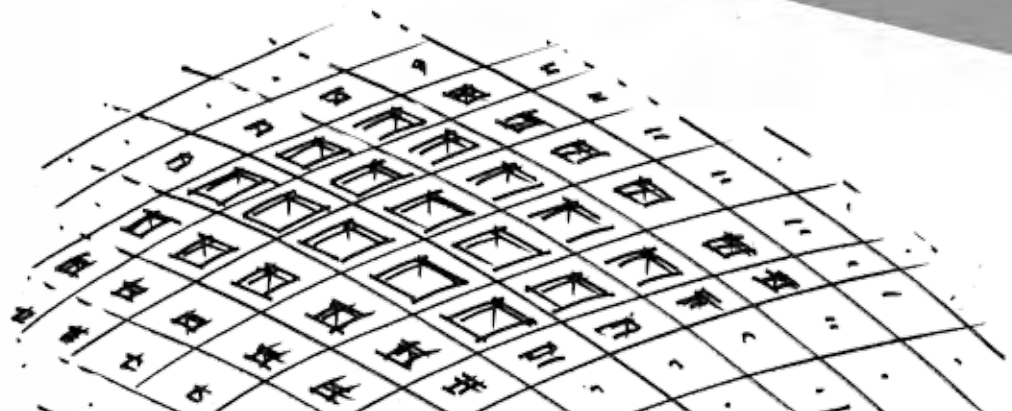
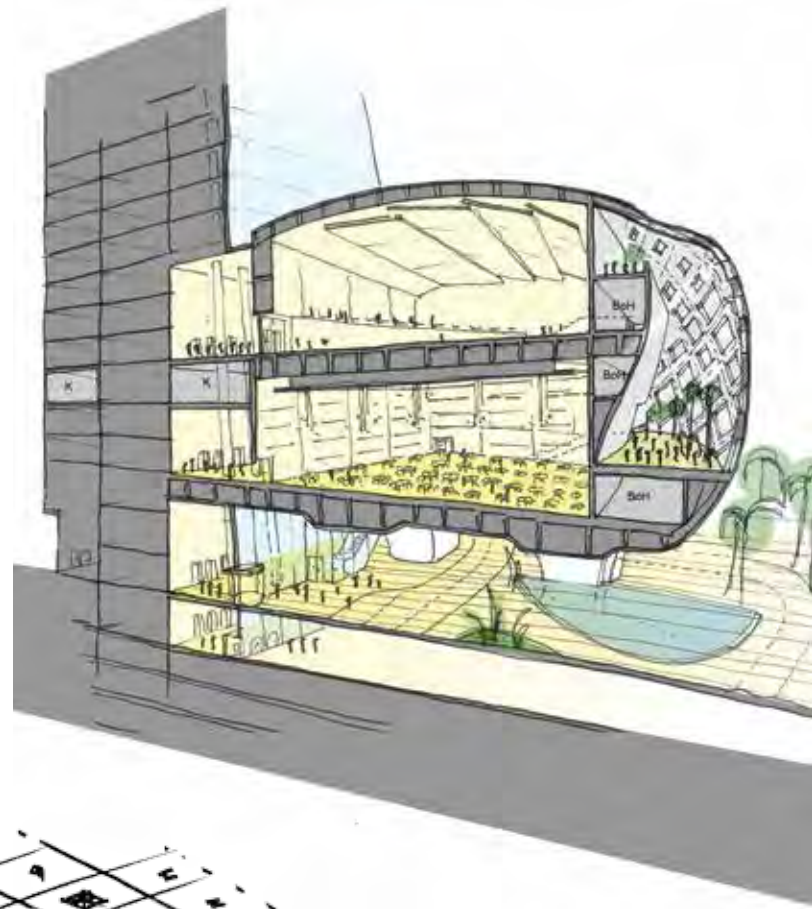
Carlos Alba  
Jorge Beroiz  
Xia Chun  
Christina Dahdaleh  
Robert Davies  
James Lai  
Jan-Maurits Loecke  
Jillian McColgan  
Somya Tewari  
Denise Vilela  
Elizabeth Waters



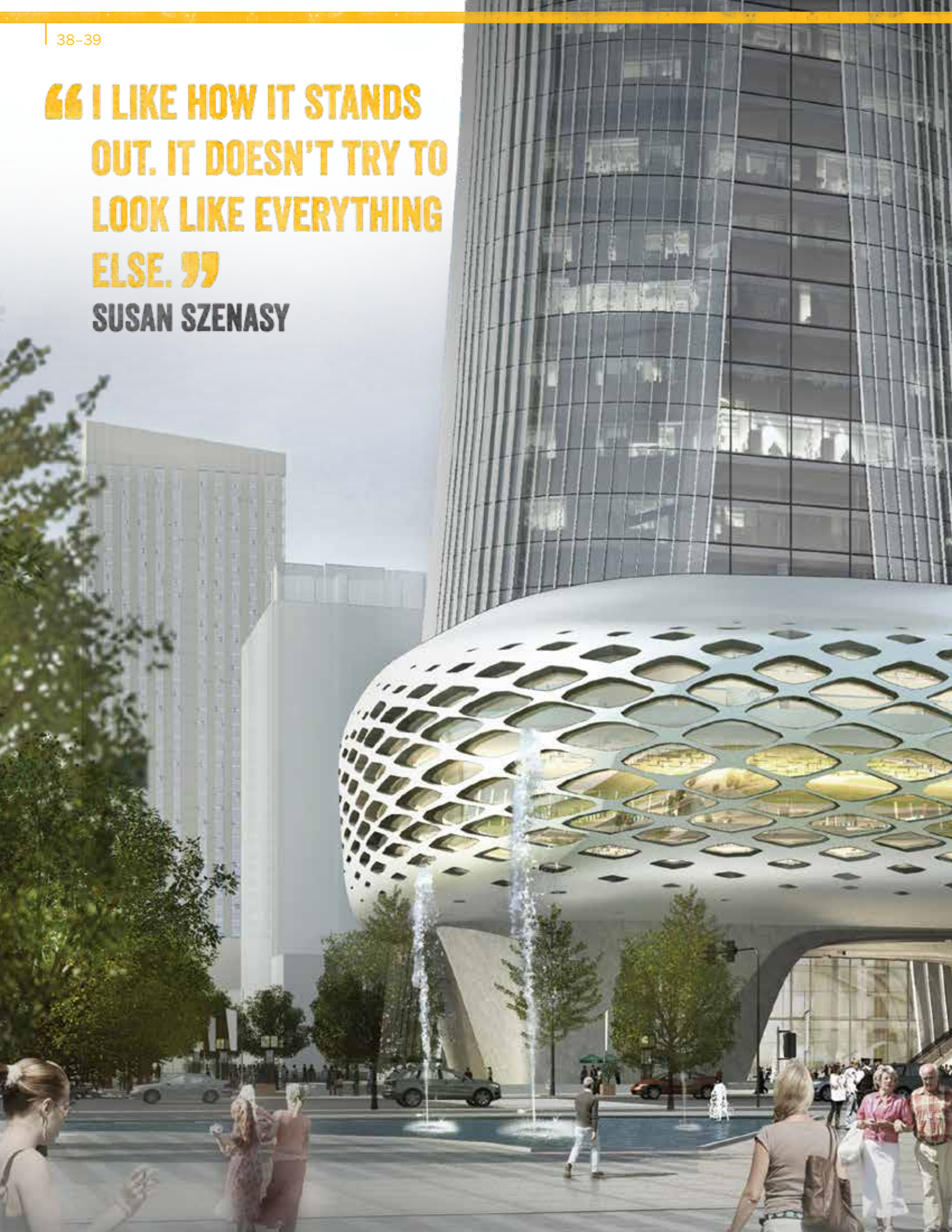


# CURVES OF STEEL

When it comes to architectural landmarks, there are certain names that are synonymous with iconic design and equally impressive locales. How does an emerging city compete? Designers of CCN Conference Centre tried to figure this out. This 15,000-SM addition in the Central Business District of Nantong will add visual interest, functionality and accessibility to this site. With the ability to hold over 4,000 people at one time, it was important that this building did not disturb the urban setting, but had strong enough architecture to give the conference center its own character. The result is a highly-efficient building that makes use of the latest design technologies to create a memorable, connected place.



**“ I LIKE HOW IT STANDS  
OUT. IT DOESN'T TRY TO  
LOOK LIKE EVERYTHING  
ELSE. ”**  
**SUSAN SZENASY**





**THE WHITGIFT QUARTER**  
LONDON, UK

Ken Christian  
Nick Guy  
Sally Hart  
Mrunalini Neelamraju  
Nora Nilsen  
Richard Palmer  
Nathmya Saffarini  
Philip Steel



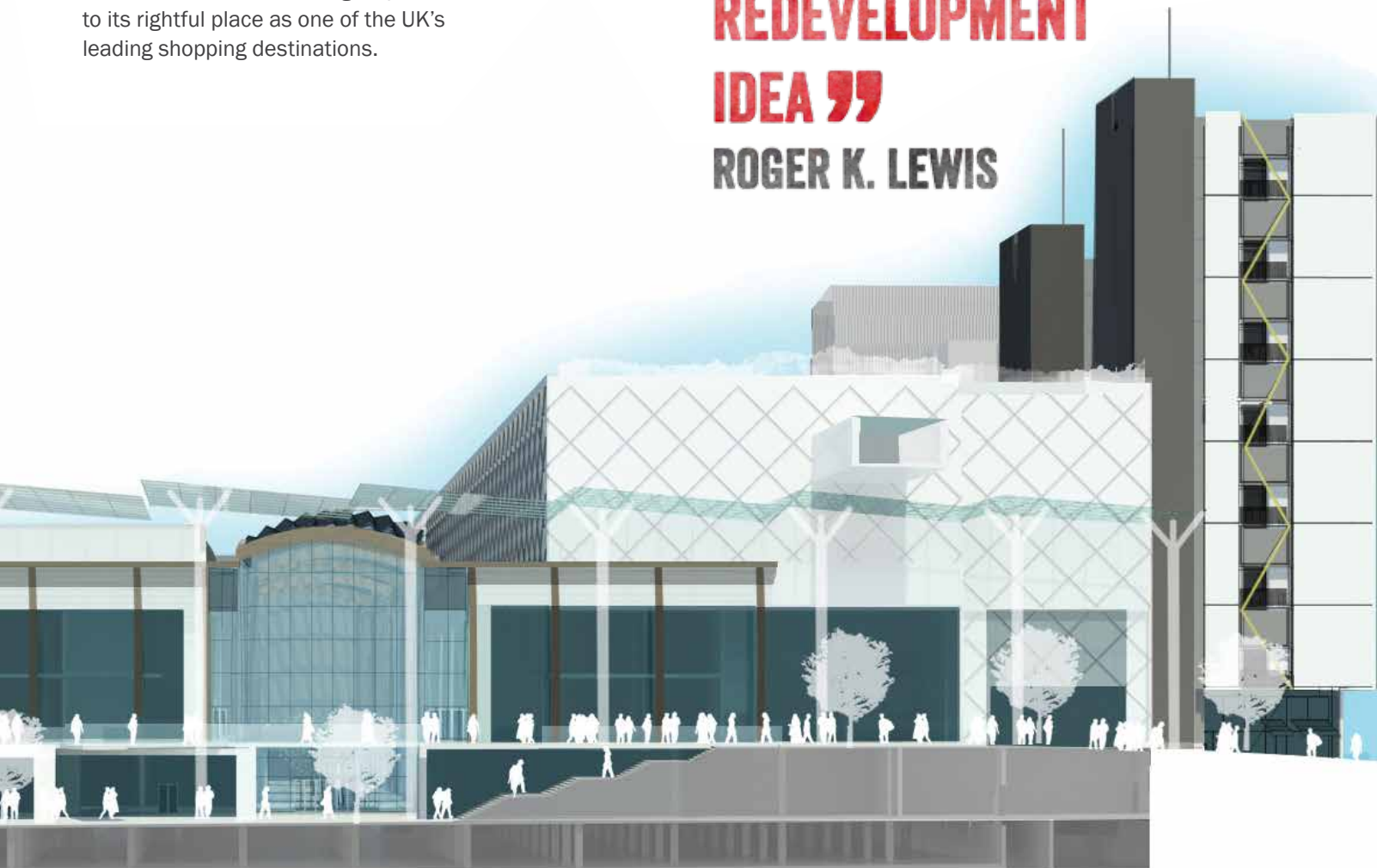


For years, retail forecasters have proclaimed that the mall is dead. In response, developers and architects around the globe have looked for different ways to bring retail options to new markets and revive abandoned existing shopping districts. Some have elected to include innovative amenities within enclosed malls, but the open town center model has proved to be the strongest contender for re-invigorating many retail developments. The Whitgift Quarter project aims to achieve just that—a boost in reestablishing its image and standing in the greater London area. Featuring 150,000 SM of retail space, over 450 residential units, a 225-room hotel and space for leisure options, the plans for this development will reintroduce a more dense urban fabric to Croydon's town center. Designers used the historical growth of the area as a guideline to adapt the traditional retail model and bring the streets and public spaces back to this townscape. The team anticipates that the new transformed retail core will restore Whitgift Quarter to its rightful place as one of the UK's leading shopping destinations.

# HISTORY IN THE MAKING

“ A STRONG PRESENTATION OF A COMMERCIAL REDEVELOPMENT IDEA ”

ROGER K. LEWIS



Steve Galbreath  
Erich Dohrer  
Alberto Galindo  
Newsha Mirzaie  
Hon Yan Mok  
Dustin Wekesser

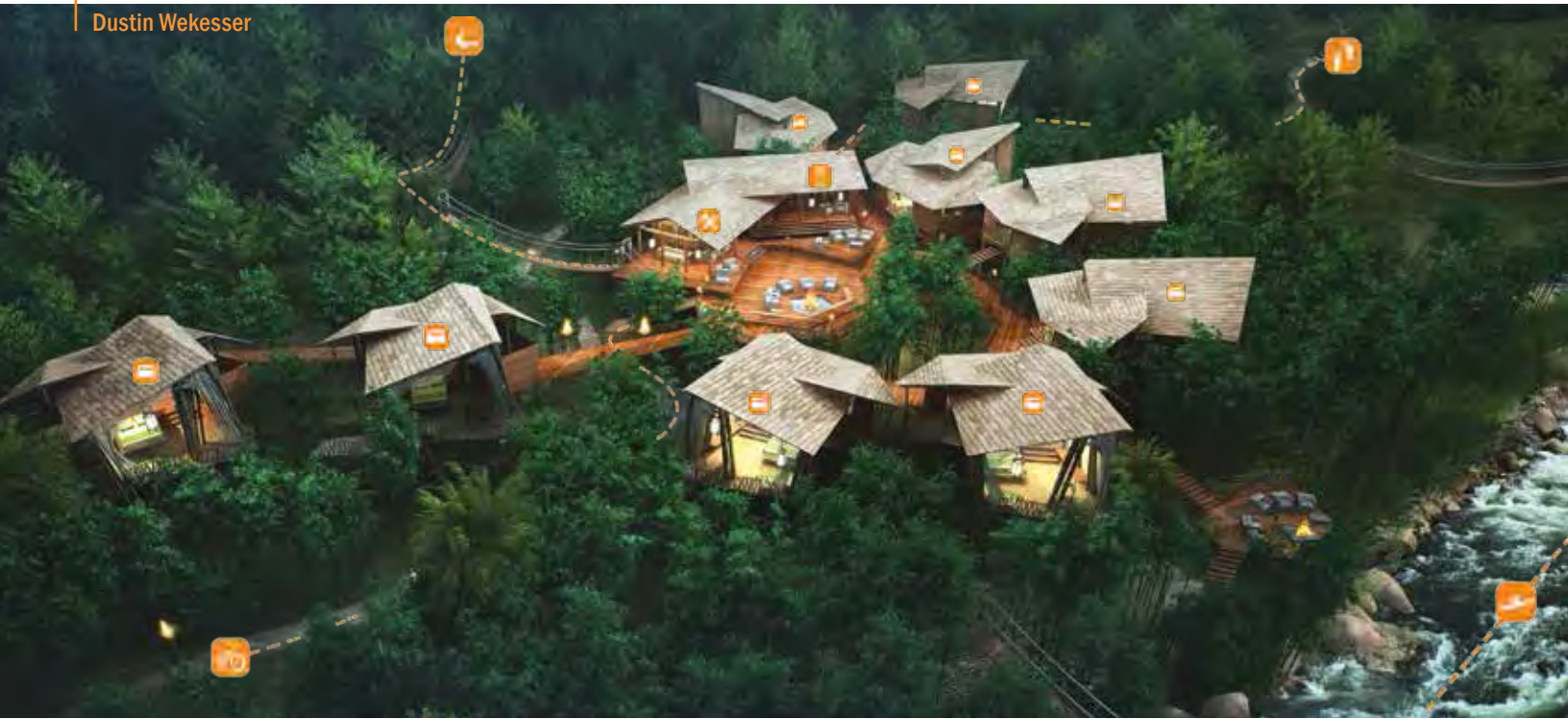


# HONORABLE





Dustin Wekesser

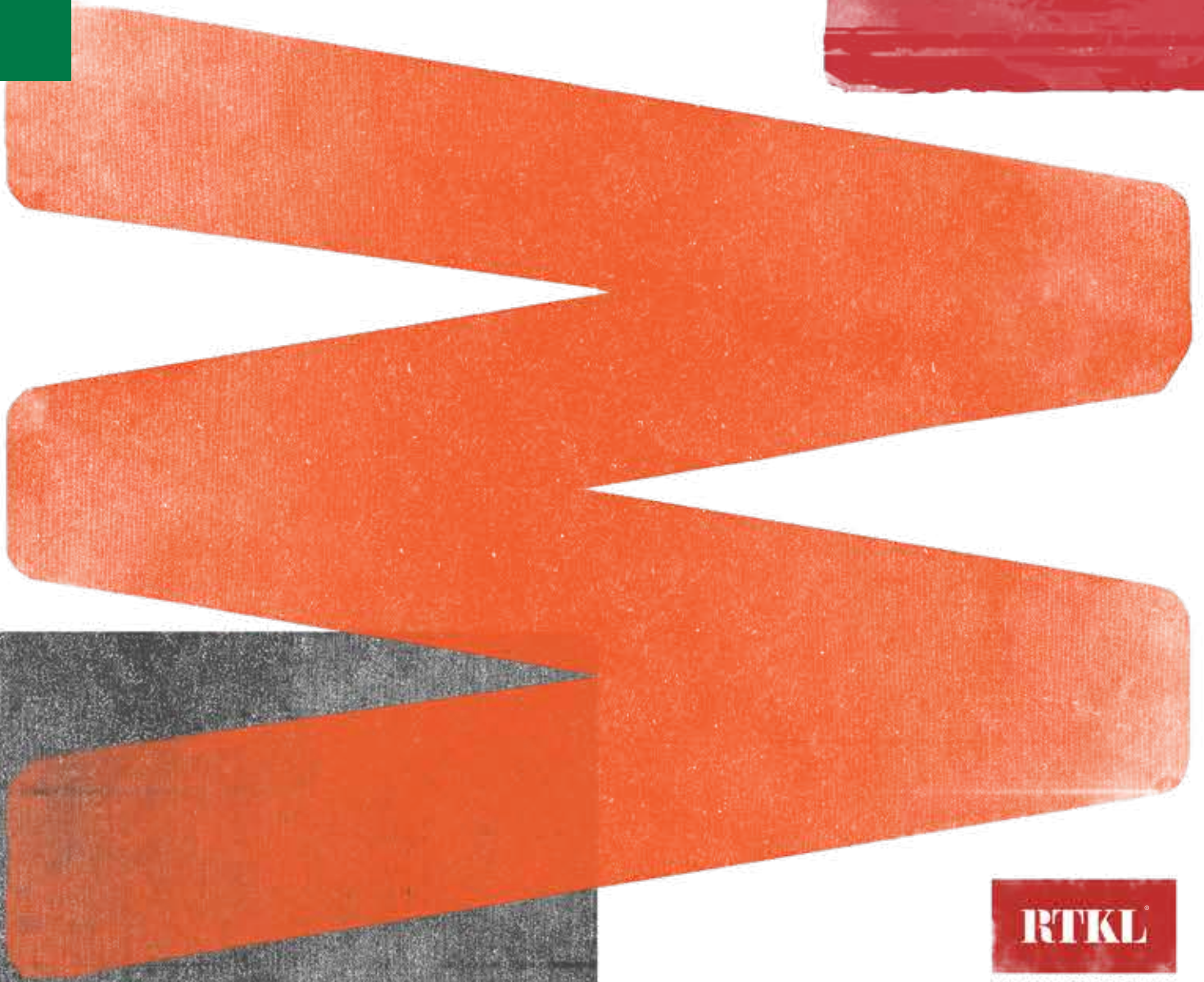


# MENTIONS



WORKS IN PROGRESS (WIP) IS AN ANNUAL COLLECTION OF IDEAS AND DESIGN CONCEPTS FROM ACROSS ALL SERVICES, GEOGRAPHIES AND PRACTICE GROUPS OF RTKL. THE WORK HAS BEEN SELECTED BY A JURY OF EXPERIENCED PROFESSIONALS WHOSE COMMENTS APPEAR IN EACH CASE STUDY.

©2013 RTKL ASSOCIATES INC. ALL RIGHTS RESERVED.



AN ARCADIS COMPANY